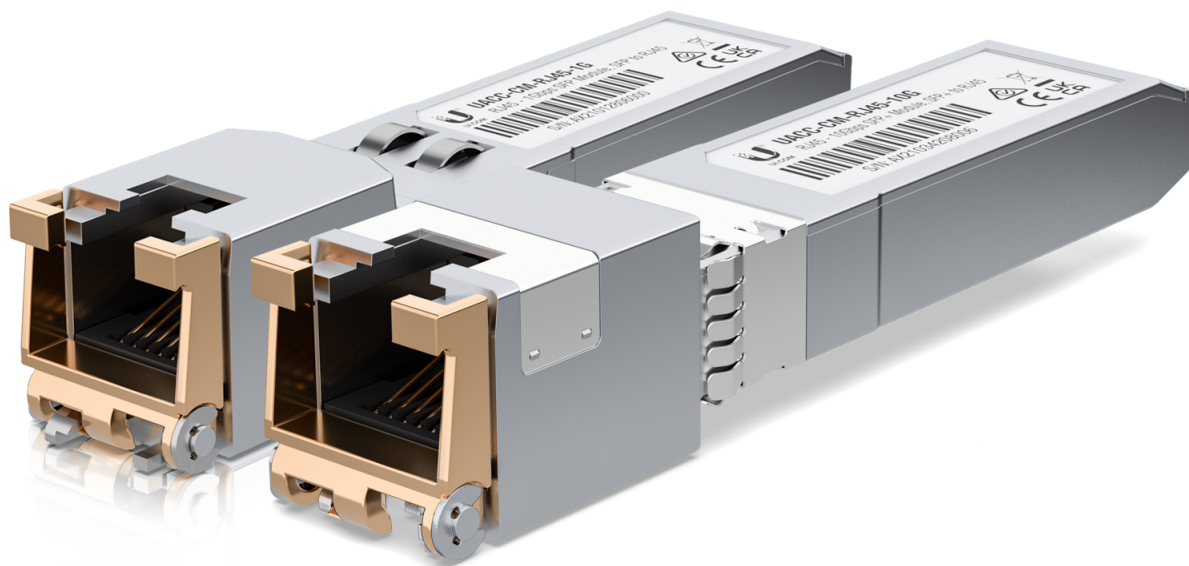




## RJ45 to SFP/SFP+ Module



**UACC-CM-RJ45-10G**

Supported Media	Copper
Connector Type	RJ45
Data Rate	1/10 Gbps
Max. Power Consumption	3W
Cable Distance	1 Gbps (Cat 5e): 100 m 10 Gbps (Cat 6A): 30 m
Operating Temperature	0 to 70° C (32 to 158° F)
Pack Options	1-pack

**UACC-CM-RJ45-1G**

Supported Media	Copper
Connector Type	RJ45
Data Rate	10/100/1000 Mbps
Max. Power Consumption	1.2W
Cable Distance	100 m
Operating Temperature	0 to 70° C (32 to 158° F)
Pack Options	1-pack

