





# AXE5400 Tri-Band Wi-Fi 6E Router


Faster. Broader. Unstoppable.



Archer AXE75

 Ultra-Fast Wi-Fi  
up to 5400 Mbps<sup>†</sup>

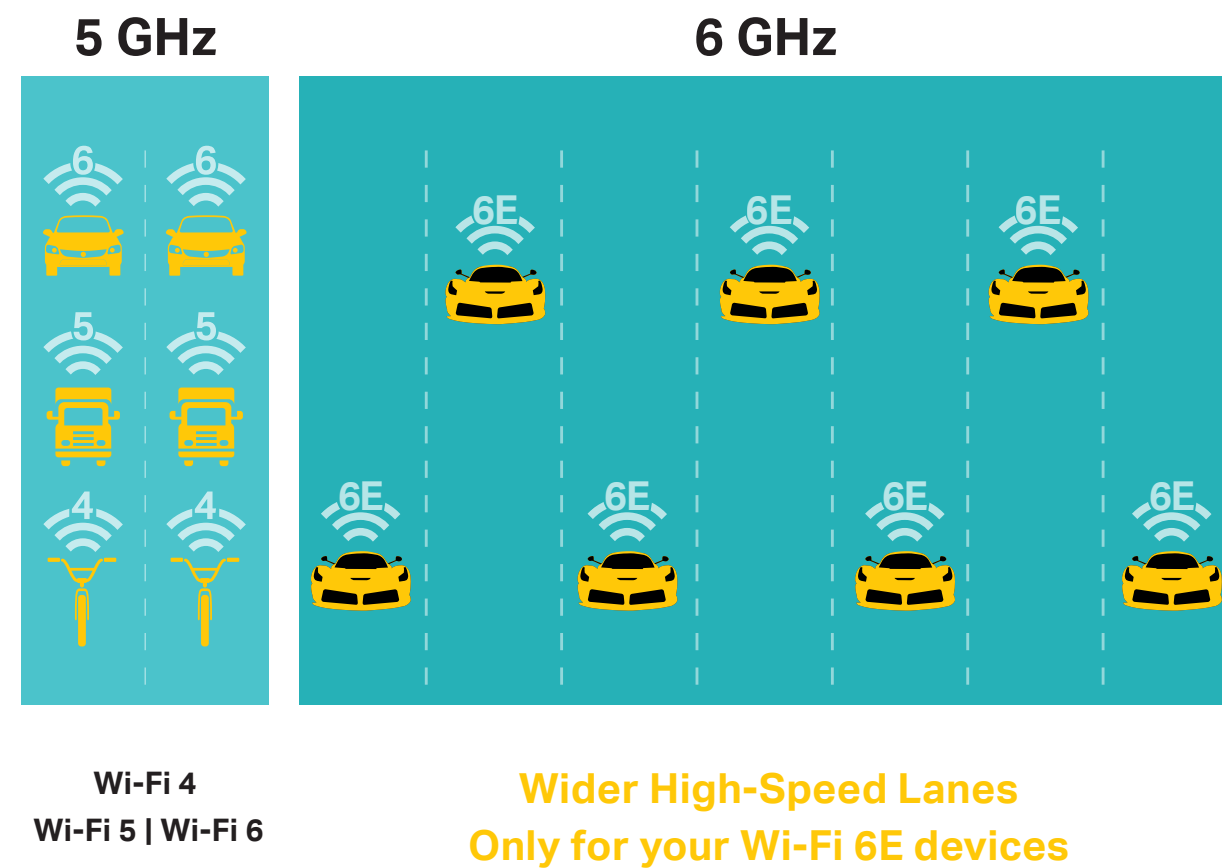
 Extensive Coverage  
6 High-Performance Antennas

 Powerful Processing  
1.7 GHz Quad-Core CPU

**6E** Wi-Fi 6E  
Greenfield 6 GHz Band

# Highlights

## Wi-Fi 6E<sup>+</sup> Huge Leap Forward for Wi-Fi



### Robust High-Speed Connections

Connect to an even faster Wi-Fi. The brand-new 6 GHz band is wide enough for 7 extra 160 MHz channels, preventing competition over bandwidth and drops in speed.†

### Clean and Congestion-Free

The 6 GHz band is exclusive to Wi-Fi 6E devices, which prevents interference from legacy devices. Unleash the most out of the latest Wi-Fi and enjoy congestion-free networking.

## TP-Link HomeShield

TP-Link's premium security services keep your home network safe with cutting-edge features for network and IoT protection.\*



### Network Protection

Detect cyber threats to keep your privacy and connected devices well protected.



### Quality of Service (QoS)

Prioritize your bandwidth needs to get a better networking experience.



### Parental Controls

Manage online time and block inappropriate content to maintain healthy online habits.



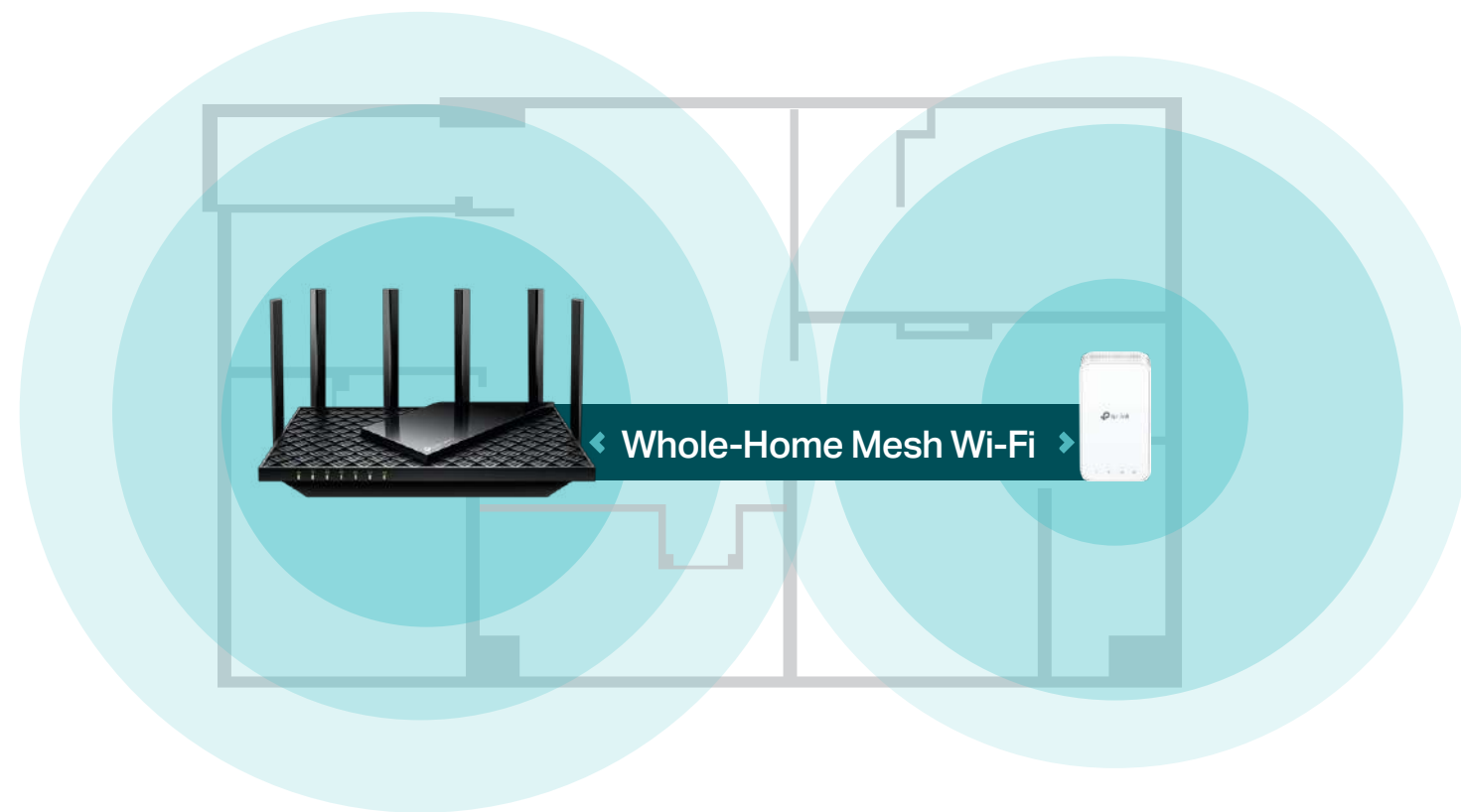
### Comprehensive Reports

Gain full statistics and insights to help you understand your home network better.

# Highlights

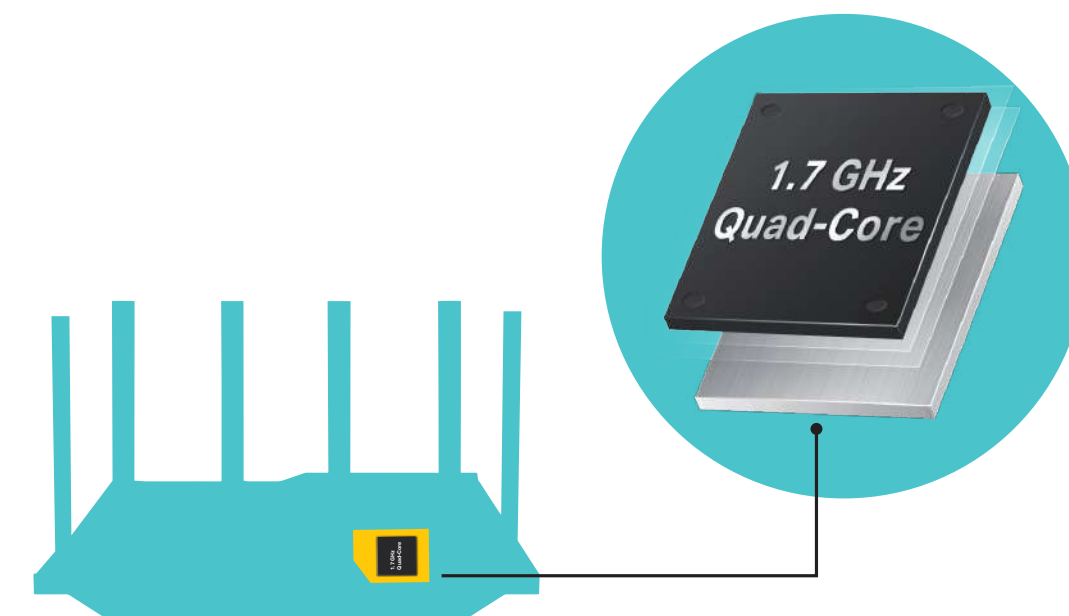
## Flexible Whole-Home Wi-Fi

OneMesh™ is a simple way to form a Mesh network with a single Wi-Fi name for seamless whole-home coverage. Connect a OneMesh™ range extender to Archer AXE75 and never waste time searching for a stable connection again.



## Powerful 1.7 GHz CPU

A powerful 1.7 GHz quad-core CPU processes multiple complex tasks and demanding applications with ease. Its processing power minimizes internal latency to keep your connections fast and uninterrupted.

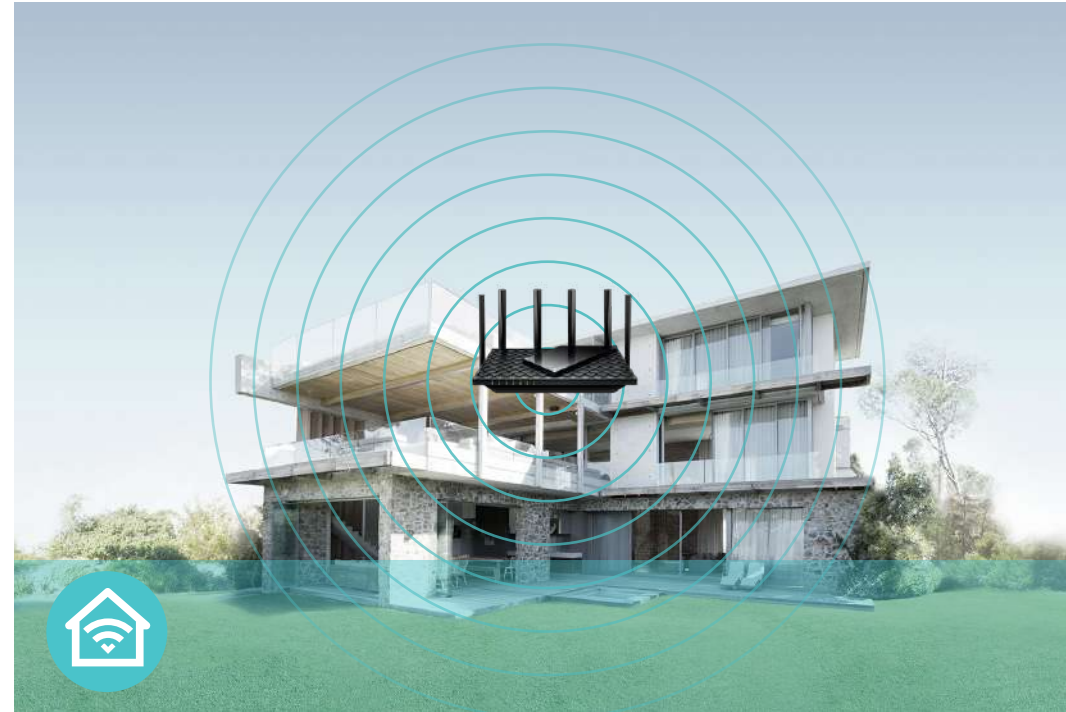


# Features



## Speed

- AXE5400 Wi-Fi – 5.4 Gbps tri-band Wi-Fi 6E enables gaming, streaming and high-speed downloading on multiple devices—all at the same time†
- Greenfield 6 GHz Band – Provides robust high-speed connections with a brand-new expansive and congestion-free band.
- Tri-Band Capacity – Provides additional spectrum to connect more wireless clients and minimize congestion.
- Connect More, Stay Fast – Supports OFDMA to reduce congestion and quadruple your average throughput†



## Wi-Fi Range

- Ultimate Range Wi-Fi – Six high-gain external antennas deliver a Wi-Fi signal to every corner of your home, making all of your connections more efficient and stable
- Beamforming Technology – Concentrates Wi-Fi signals towards individual devices to ensure stronger connections
- Seamless OneMesh network – Transfer between signals without any drops or lag and manage your whole network using a centralized panel



## Reliability

- Secure VPN Access – Connects to a private network with a safe and secure OpenVPN, PPTP VPN, and L2TP VPN connection and provides VPN access to devices in your network with VPN Client
- Airtime Fairness – Balances bandwidth of connected devices to improve overall throughput and efficiency
- Smart Connect – Intelligently switches each device's connection to the optimum available Wi-Fi band

# Features



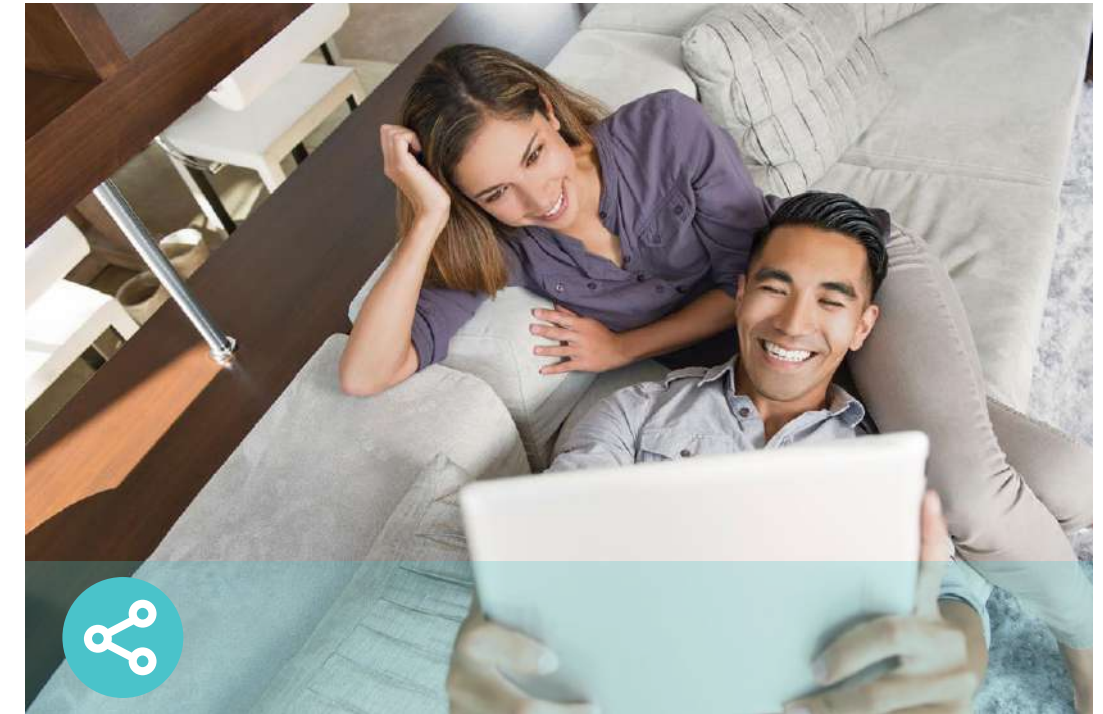
## Ease of Use

- Intuitive Web UI – Ensures quick and simple installation without hassle
- WPS (Wi-Fi Protected Setup) – Help you to quickly and securely connect your devices to the router's network with a tap
- Power On/Off – Conveniently power on or off your router as required
- Hassle-free Management with Tether App – Network management is made easy with the TP-Link Tether app, available on any Android and iOS device



## Security

- HomeShield – TP-Link's premium security services keep your home network safe with cutting-edge features for network and IoT protection
- Guest Network – Provides separate access for guests to secure the home network
- Access Control – Establishes a whitelist or blacklist to allow or restrict certain devices to access the internet
- Encryptions for Secure Network – WPA/WPA2-Personal, WPA2/WPA3-Personal, WPA/WPA2-Enterprise encryptions provide active protection against security threats



## Easy Sharing

- USB Port – Connects external storage devices to rapidly share files, photos, and videos
- Built-in Media Server – Allows you to play music, watch videos and view photos from any device on your network

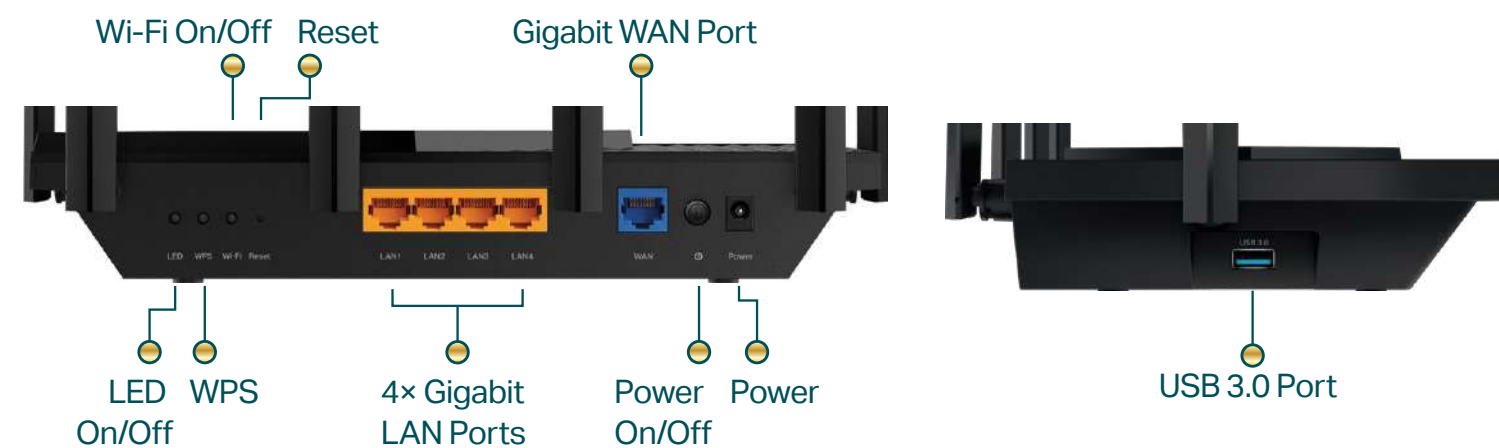
# Specifications

## Wireless

- Standards: IEEE 802.11ax 6 GHz, IEEE 802.11ax/ac/n/a 5 GHz, IEEE 802.11ax/n/b/g 2.4 GHz
- WiFi Speeds: 2402 Mbps (6 GHz) + 2402 Mbps (5 GHz) + 574 Mbps (2.4 GHz)<sup>†</sup>
- WiFi Range: 6× Fixed High-Performance Antennas, Beamforming
- WiFi Capacity: Tri-Band, OFDMA, Airtime Fairness, DFS, 6 Streams
- Working Modes: Router Mode, Access Point Mode

## Hardware

- Processor: 1.7 GHz Quad-Core CPU
- Ethernet Ports: 1× Gigabit WAN Port, 4× Gigabit LAN Ports
- USB Support: 1× USB 3.0 Port
- Buttons: LED On/Off Button, WPS Button, Wi-Fi On/Off Button, Reset Button, Power On/Off Button
- Power: 12 V/2.5 A



## Security

- WiFi Encryption: WPA, WPA2, WPA3, WPA/WPA2-Enterprise (802.1x)
- Network Security: SPI Firewall, Access Control, IP & MAC Binding, Application Layer Gateway, HomeShield Security
- Guest Network:
  - 1× 6 GHz Guest Network, 1× 5 GHz Guest Network, 1× 2.4 GHz Guest Network
- VPN Server: OpenVPN, PPTP, L2TP VPN Server
- VPN Client: OpenVPN, PPTP, L2TP VPN Client

## Software

- Protocols: IPv4, IPv6
- Service Kits: HomeShield
- OneMesh: Supported
- Parental Controls: HomeShield Parental Controls
- WAN Types: Dynamic IP, Static IP, PPPoE, PPTP, L2TP
- Quality of Service: QoS by Device
- Cloud Service: Auto Firmware Upgrade, TP-Link ID, DDNS
- NAT Forwarding: Port Forwarding, Port Triggering, DMZ, UPnP, Virtual Server
- DDNS: TP-Link, NO-IP, DynDNS

# Specifications

## Physical

- Dimensions (W×D×H): 10.7 × 5.8 × 1.9 in (272.5 × 147.2 × 49.2 mm)
- Package Contents:
  - Wi-Fi Router Archer AXE75
  - Power Adapter
  - RJ45 Ethernet Cable
  - Quick Installation Guide

## Other

- System Requirements:
  - Internet Explorer 11+, Firefox 12.0+, Chrome 20.0+, Safari 4.0+, or other JavaScript-enabled browser
  - Cable or DSL Modem (if needed)
  - Subscription with an internet service provider (for internet access)
- Certifications: FCC, RoHS
- Environment:
  - Operating Temperature: 0°C~40°C (32°F ~104°F)
  - Operating Humidity: 10%~90% non-condensing



For more information, please visit

<http://www.tp-link.com/products/details/Archer-AXE75.html>

or scan the QR code left

\*Maximum wireless signal rates are the physical rates derived from IEEE Standard 802.11 specifications. Actual wireless data throughput and wireless coverage are not guaranteed and will vary as a result of network conditions, client limitations, and environmental factors, including building materials, obstacles, volume and density of traffic, and client location. Use of Wi-Fi 6 (802.11ax), Wi-Fi 6E, and features including OFDMA, 1024-QAM, and HE160 require clients to also support the corresponding features. Seven 160MHz channels may not be all available in the 6 GHz band in some regions/countries due to regulatory restrictions.

^Saving clients' battery power requires clients to also support the 802.11ax Wi-Fi standard. Actual power reduction may vary as a result of network conditions, client limitations, and environmental factors.

\*HomeShield includes the Free Basic Plan. Fees apply for the Pro Plan. Visit [tp-link.com/homeshield](http://tp-link.com/homeshield) for more information

\*\*Use of WPA3 requires clients to also support the corresponding feature.

\*\*\*This router may not support all the mandatory features as ratified in Draft 3.0 of the IEEE 802.11AX specification.

\*\*\*\*Further software upgrades for feature availability may be required.

©2021 TP-Link

## Test Data

- WiFi Transmission Power:
  - FCC: ≤29dBm (2.4 GHz), ≤28dBm (5 GHz), ≤22dBm (6 GHz)
  - CE: ≤17dBm (2.4 GHz), ≤27dBm (5 GHz), ≤20dBm (6 GHz)
- WiFi Reception Sensitivity:
  - 2.4 GHz:
    - 11ax HE20 MCS0:-95dBm, 11ax HE20 MCS11:-64dBm
    - 11ax HE40 MCS0:-92dBm, 11ax HE40 MCS11:-62dBm
  - 5 GHz:
    - 11ax HE20 MCS0:-94dBm, 11ax HE20 MCS11:-63dBm
    - 11ax HE40 MCS0:-91dBm, 11ax HE40 MCS11:-60dBm
    - 11ax HE80 MCS0:-88dBm, 11ax HE80 MCS11:-57dBm
    - 11ax HE160 MCS0:-85dBm, 11ax HE160 MCS11:-54dBm
  - 6 GHz:
    - 11ax HE20 MCS0:-93dBm, 11ax HE20 MCS11:-62dBm
    - 11ax HE40 MCS0:-90dBm, 11ax HE40 MCS11:-59dBm
    - 11ax HE80 MCS0:-87dBm, 11ax HE80 MCS11:-56dBm
    - 11ax HE160 MCS0:-84dBm, 11ax HE160 MCS11:-53dBm