

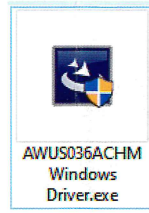
Please be aware this quick-start guide is not intended to be a substitute for the User Manual. To become familiar with all the operating procedures and technical information, be sure to read all information shown during the installation process.

1

<https://info.alfa.com.tw/awus036achm>

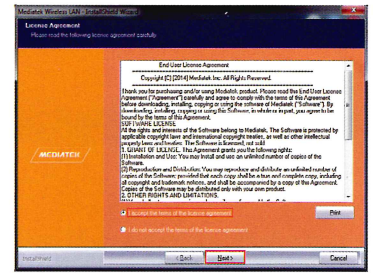
Please go to <https://info.alfa.com.tw/awus036achm> to download the latest driver.

2



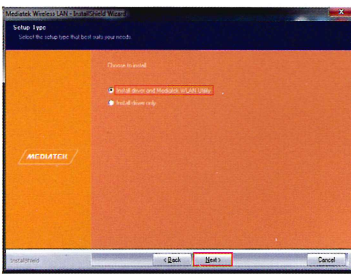
After downloading double-click to install and follow the instructions.

3



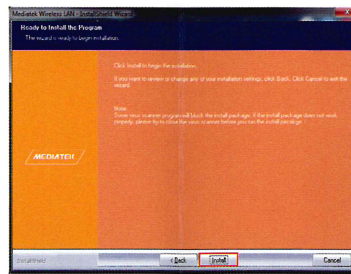
Read the license agreement, choose "I accept the terms of the license agreement" and click "Next".

4



Choose "Install driver and Mediatek WLAN Utility" and click "Next".

5



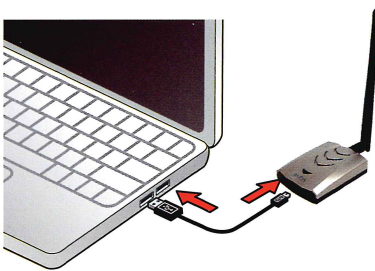
Click "Install" to continue.

6



Click "Finish".

7



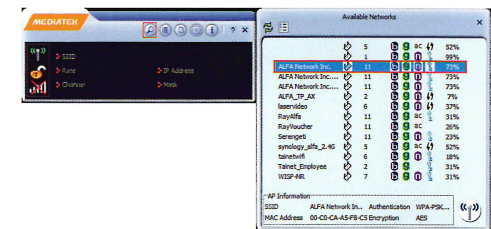
Plug the AWUS036ACHM into your PC/laptop.

8



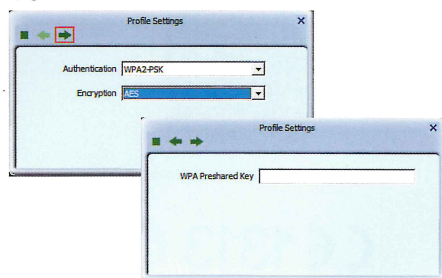
Found New Hardware pops up from the utility bar.

9



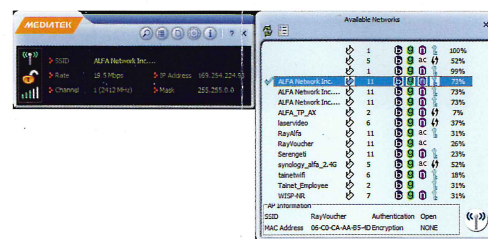
Select your target network and double-click it.

10



Click "Next" then enter the network security key.

11



You should see a ✓ symbol in front of the name of the network; It means you have successfully connected to your wireless network.

For more information, including Linux support, go to the URL below or scan the code:



<https://info.alfa.com.tw/awus036achm>



This product is suitable for use in all EU countries. © ALFA Network Inc.

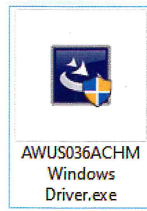
Por favor, tenga en cuenta que esta guía de instalación rápida no es un sustituto del Manual de Usuario. Para familiarizarse con todos los procedimientos e información técnica, asegúrese de leer toda la información mostrada durante el proceso de instalación

1

<https://info.alfa.com.tw/awus036achm>

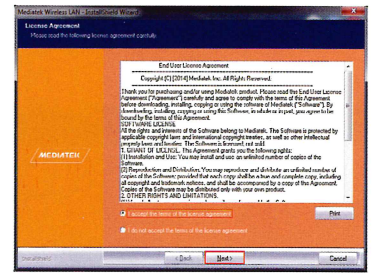
Por favor, vaya a <https://info.alfa.com.tw/awus036achm> para descargar el programa más reciente.

2



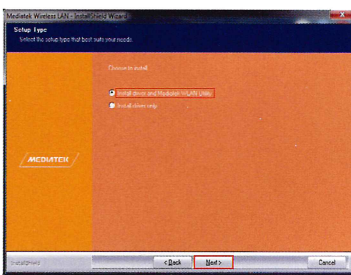
Después de descargarlo, haga doble clic para instalar y siga las instrucciones.

3



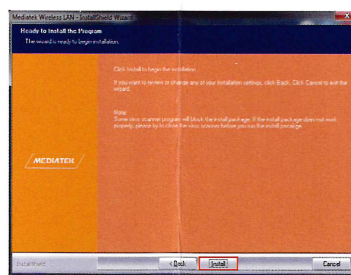
Leer el acuerdo de licencia, elija la opción **"I accept the terms of the license agreement"** (Acepto los términos del acuerdo de licencia) y seleccione **"Next"**.

4



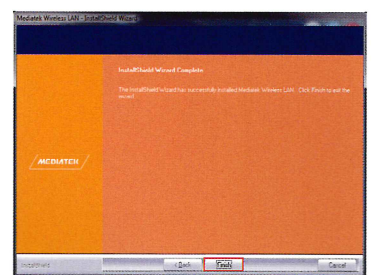
Seleccione **"Install driver and Mediatek WLAN Utility"** (Instalar el driver y la utilidad WLAN de Mediatek) seleccione **"Next"**.

5



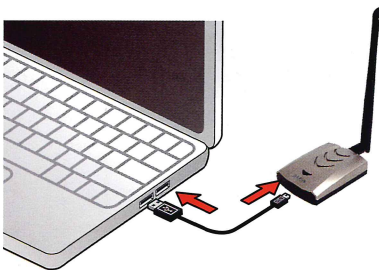
Seleccione **"Install"** para continuar.

6



Seleccione **"Finish"**.

7



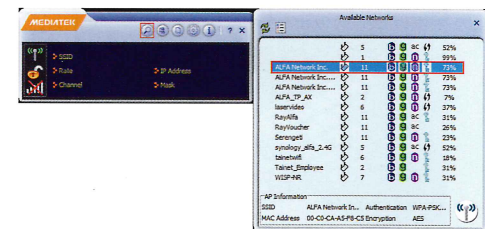
Conecte el AWUS036ACHM a su PC/ Computadora Portátil.

8



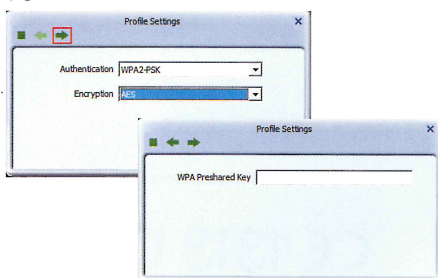
En la barra de estado encuentre **"Found New Hardware"**.

9



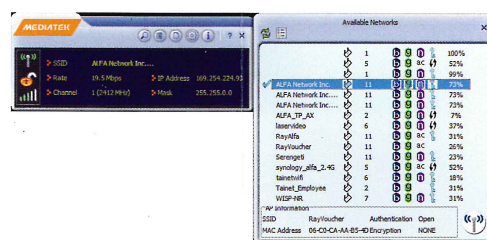
Seleccione la red que desea conectarse y haga dos clic para conectarse.

10



Seleccione **"Next"**, y escribir el código de seguridad de la red.

11



Observara un pequeño **✓** símbolo en frente del nombre de la red, esto significa que está conectado exitosamente a la red inalámbrica.

Para obtener más información, sobre la compatibilidad con Linux, vaya a la siguiente URL o escanear el código:



<https://info.alfa.com.tw/awus036achm>



Este producto es adecuado para todos los países de la EU. ALFA Network Inc. © protegido por derechos del autor