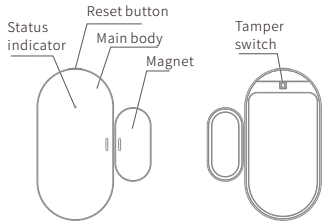


Door/Window Sensor User Manual

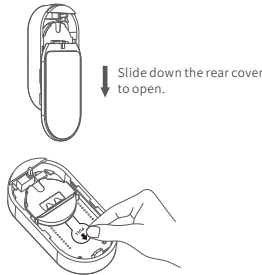


Product Description



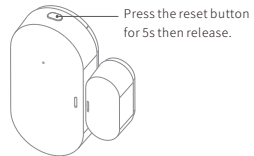
Network Setting

1. Power on the product.



Remove the battery insulation film to power on the product.

2. Press the reset button for 5S and release, the green LED will flash for network setting.

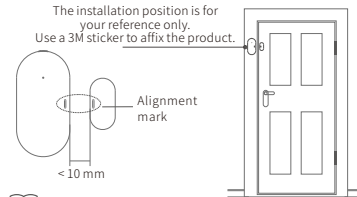


Distribution network hint:

- Press the reset button for 5s-10s, the green LED is on, once green LED turns off, release the reset button, the green LED flashes, means ready for network setting. It keeps on flashing for 20s during network setting. If pressing for more than 10s, network setting cancelled.
- The green LED will be on for 5s to indicate network setting succeeds. If fails, the green LED is off.

Installation Instructions

Install the product on a door or window with the main body fixed on the door or window frame (please install on wooden door or window), as shown in the following figure.



- Do not install the product outdoors, on an unstable base, or anywhere unprotected from the rain.
- Do not place magnetic metals or other objects near the product. when pasting and installing, it is necessary to ensure that
- The installation place of the door sensor should be smooth, flat, dry and clean.

Technical Parameters

Wireless Technology	ZigBee
Working Voltage	DC 3 V (CR2032 battery)
Working Temperature	-10°C to +55°C
Low battery indication	Yes
Alarm Triggering Distance	23±5 mm
Battery Life	More than one year (20 times per day)
Dimensions	Main body: 52.6 mm x 26.5 mm x 13.8 mm Magnet: 25.5 mm x 12.5 mm x 13 mm

Toxic or Hazardous Substances or Elements of this Product

Component Name	Toxic or Hazardous Substances or Elements					
	Lead (Pb)	Mercury (Hg)	Cadmium (Cd)	Hexavalent chromium (Cr (VI))	Polybrominated biphenyls (PBBs)	Polybrominated diphenyl ethers (PBDEs)
LED	0	0	0	0	0	0
PCB	0	0	0	0	0	0
Cover and other components	0	0	0	0	0	0

This table complies with SJ/T 11364.

0: indicates that the toxic or hazardous substance amount contained in all homogeneous materials of a component does not exceed that stipulated in GB/T 26572.

X: indicates that the toxic or hazardous substance amount contained in at least one of the homogeneous materials of a component exceeds that stipulated in GB/T 26572.



Warranty Certificate

Warranty policy:

1. If the product has quality problems within 7 days of the payment date, you can apply for a refund based on the invoice price or to replace with the same model or have it repaired..
2. If the product has quality problems within 15 days of the payment date, you can apply to replace the product with the same model or have it repaired.
3. If the product has quality problems within 12 months of the payment date, you can apply to have it repaired.

What is not covered under this warranty:

1. The product owner has no warranty certificate or the warranty service has expired.
2. Damage caused by improper use, maintenance, or storage
3. Damage caused by disassembly and repair without Tuya's authorization
4. Damage caused by force majeure
5. Normal discoloration and depreciation after the product has been used

User Form

User information (Specify real information. Tuya promises to use the information only for after-sales services.)

Name _____

Phone number _____

Email _____

Zip code _____

Address _____

Product information

Name _____ Model _____

Color _____ Product SN _____

Service Return Replace Repair

Fault symptoms _____

Handling date _____

Maintenance personnel signature _____

Vendor Form

User information (Specify real information. Tuya promises to use the information only for after-sales services.)

Name _____

Phone number _____

Email _____

Zip code _____

Address _____

Product information

Name _____ Model _____

Color _____ Product SN _____

Service Return Replace Repair

Fault symptoms _____

Handling date _____

Maintenance personnel signature _____